



PinX1 Polyclonal Antibody

Catalog No	YP-Ab-00494
Isotype	IgG
Reactivity	Human;Rat;Mouse;
Applications	IHC;IF;ELISA
Gene Name	PINX1
Protein Name	PIN2/TERF1-interacting telomerase inhibitor 1
Immunogen	The antiserum was produced against synthesized peptide derived from human PINX1. AA range:121-170
Specificity	PinX1 Polyclonal Antibody detects endogenous levels of PinX1 protein.
Formulation	Liquid in PBS containing 50% glycerol, 0.5% BSA and 0.02% sodium azide.
Source	Polyclonal, Rabbit,IgG
Purification	The antibody was affinity-purified from rabbit antiserum by affinity-chromatography using epitope-specific immunogen.
Dilution	IHC: 1/100 - 1/300. ELISA: 1/20000.. IF 1:50-200
Concentration	1 mg/ml
Purity	≥90%
Storage Stability	-20°C/1 year
Synonyms	PINX1; LPTL; LPTS; PIN2/TERF1-interacting telomerase inhibitor 1; Liver-related putative tumor suppressor; Pin2-interacting protein X1; Protein 67-11-3; TRF1-interacting protein 1
Observed Band	
Cell Pathway	Nucleus . Nucleus, nucleolus. Chromosome, telomere. Chromosome, centromere, kinetochore. Localizes in nucleoli, at telomere speckles and to the outer plate of kinetochores. Localization to the kinetochore is mediated by its central region and depends on NDC80 and CENPE.
Tissue Specificity	Ubiquitous; expressed at low levels. Not detectable in a number of hepatocarcinoma cell lines.
Function	domain:The TID (telomerase inhibiting domain) domain is sufficient to bind TERT and inhibit its activity.,function:Inhibits telomerase activity. May inhibit cell proliferation and act as tumor suppressor.,similarity:Belongs to the PINX1 family.,similarity:Contains 1 G-patch domain.,subcellular location:In nucleoli and at telomere speckles.,subunit:Binds to MCRS1, TERT and TERF1.,tissue specificity:Ubiquitous; expressed at low levels. Not detectable in a number of hepatocarcinoma cell lines.,
Background	domain:The TID (telomerase inhibiting domain) domain is sufficient to bind TERT and inhibit its activity.,function:Inhibits telomerase activity. May inhibit cell proliferation and act as tumor suppressor.,similarity:Belongs to the PINX1



family.,similarity:Contains 1 G-patch domain.,subcellular location:In nucleoli and at telomere speckles.,subunit:Binds to MCRS1, TERT and TERF1.,tissue specificity:Ubiquitous; expressed at low levels. Not detectable in a number of hepatocarcinoma cell lines.,

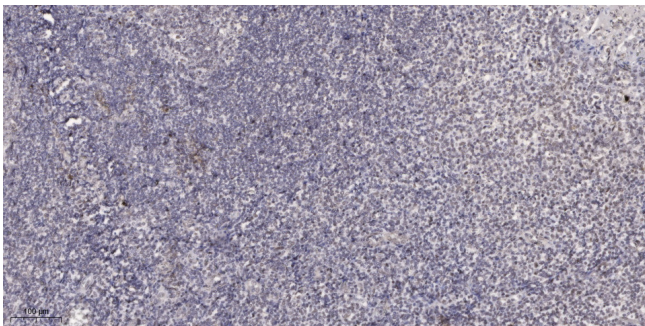
matters needing attention

Avoid repeated freezing and thawing!

Usage suggestions

This product can be used in immunological reaction related experiments. For more information, please consult technical personnel.

Products Images



Immunohistochemical analysis of paraffin-embedded human tonsil. 1, Antibody was diluted at 1:200(4° overnight). 2, Tris-EDTA,pH9.0 was used for antigen retrieval. 3,Secondary antibody was diluted at 1:200(room temperature, 45min).